



Intersectionality and Ending Homelessness for Women

Amy Turk, LCSW, Chief Innovations Officer
Erika Hartman, LMFT, Chief Program Officer

Intersectionality of Homeless Women in Los Angeles, California

- Gender
- Race and Ethnicity
- Sexual Orientation
- Gender Identity and Expression
- Age



Systems Contributing to Disproportionality in Homelessness

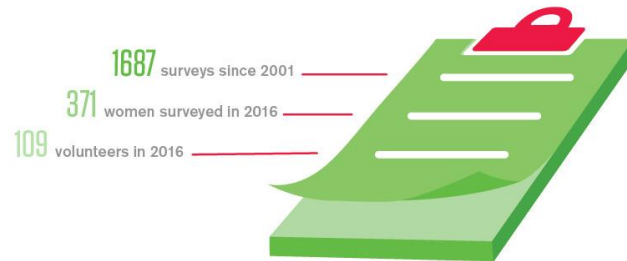
- Child Welfare System:
 - 67.5% of homeless women experienced child abuse*
 - 25% of former foster children become homeless within 2 – 4 years of aging out of the system**
 - 20% of youth in the child welfare system self-identify as LGBTQ+ **
 - African Americans make up 24.3% of children in the child welfare system, though only 8.7% of the population of Los Angeles County***
- Justice System:
 - Homeless women are 11.7% more likely than housed women to have had interactions with the police in the last year*
 - Systemic racism - lifetime likelihood of incarceration 6% African American women, 2% of Hispanic women, .9% of White women ****
 - Incarceration negatively impacts employment and housing (background checks and not counted as chronically homeless)
- Immigration System – intrinsically affecting people of color, housing, and employment. Under reporting of domestic violence.
- Military System – recruitment from low income communities and communities of color; disproportionality in active duty military, 17% African American***** compared to 13.3% of the U.S. population who are African American*****
 - VA services primarily men, 3.6% of women surveyed were veterans, none of whom had accessed services*

*Downtown Women's Needs Assessment, **Department of Child and Family Services; *** Children's Bureau; **** The Sentencing Project; ***** Pew Research Center 2017; ***** U.S. Census Bureau 2016

Downtown Women's Needs Assessment

INTRODUCTION

THE 2016 DOWNTOWN WOMEN'S NEEDS ASSESSMENT IS A COMMUNITY-BASED RESEARCH PROJECT, AND THE SIXTH IN A SERIES OF COMPREHENSIVE SURVEYS ON THE NEEDS, CHARACTERISTICS, AND CONDITIONS FACING HOMELESS AND EXTREMELY LOW-INCOME WOMEN LIVING IN DOWNTOWN LOS ANGELES.

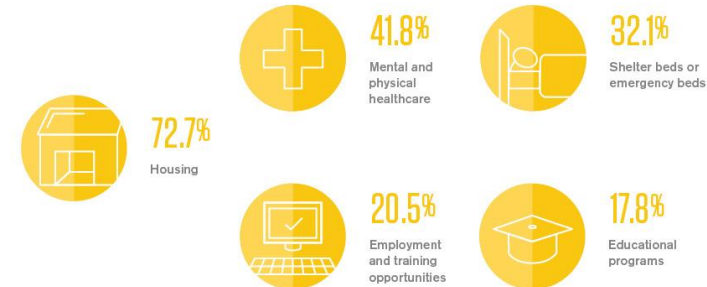


"EVERY THREE YEARS SINCE 2001, DWAC HAS CONDUCTED THIS SURVEY WITH THE GOAL OF BETTER INFORMING ALL THOSE WORKING TO IMPROVE THE HEALTH AND SAFETY OF WOMEN LIVING DOWNTOWN."

DOWNTOWN WOMEN'S ACTION COALITION | DOWNTOWNWOMENSCENTER.ORG/NEEDSASSESSMENT

COMMUNITY RESOURCES

WOMEN IDENTIFIED THE TOP FIVE RESOURCES THEY THINK ARE MOST NEEDED TO IMPROVE THE DOWNTOWN COMMUNITY.



SOLUTIONS: You can support agencies in Skid Row by donating money, time, or in-kind goods. Learn more at: DowntownWomensCenter.org/NeedsAssessment.

DOWNTOWN WOMEN'S ACTION COALITION | DOWNTOWNWOMENSCENTER.ORG/NEEDSASSESSMENT

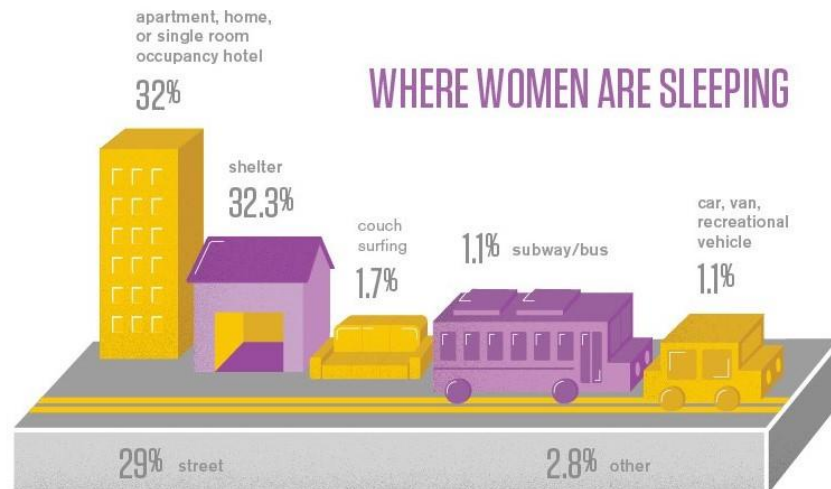
- Information gathered included demographics, housing, healthcare, violence against women, and community resources
- Intended to inform service providers, policy makers, and the general public

Gender and Gender-Based Violence

- 18,000 homeless Women in Los Angeles
- Since 2013, the number of women experiencing homelessness has increased by a staggering 55%
- Women comprise 61% of the overall homeless population increase since 2013

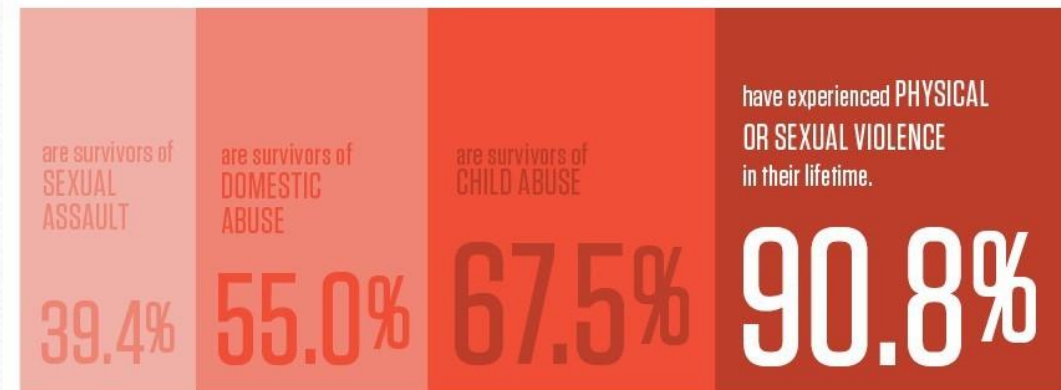
HOUSING

A LACK OF AFFORDABLE, ACCESSIBLE HOUSING FOR WOMEN IS ONE OF THE MAJOR CAUSES OF THE 55% INCREASE IN LA COUNTY WOMEN EXPERIENCING HOMELESSNESS; 73% OF SURVEY RESPONDENTS LISTED HOUSING AS THE MOST-NEEDED RESOURCE TO IMPROVE THE DOWNTOWN COMMUNITY.



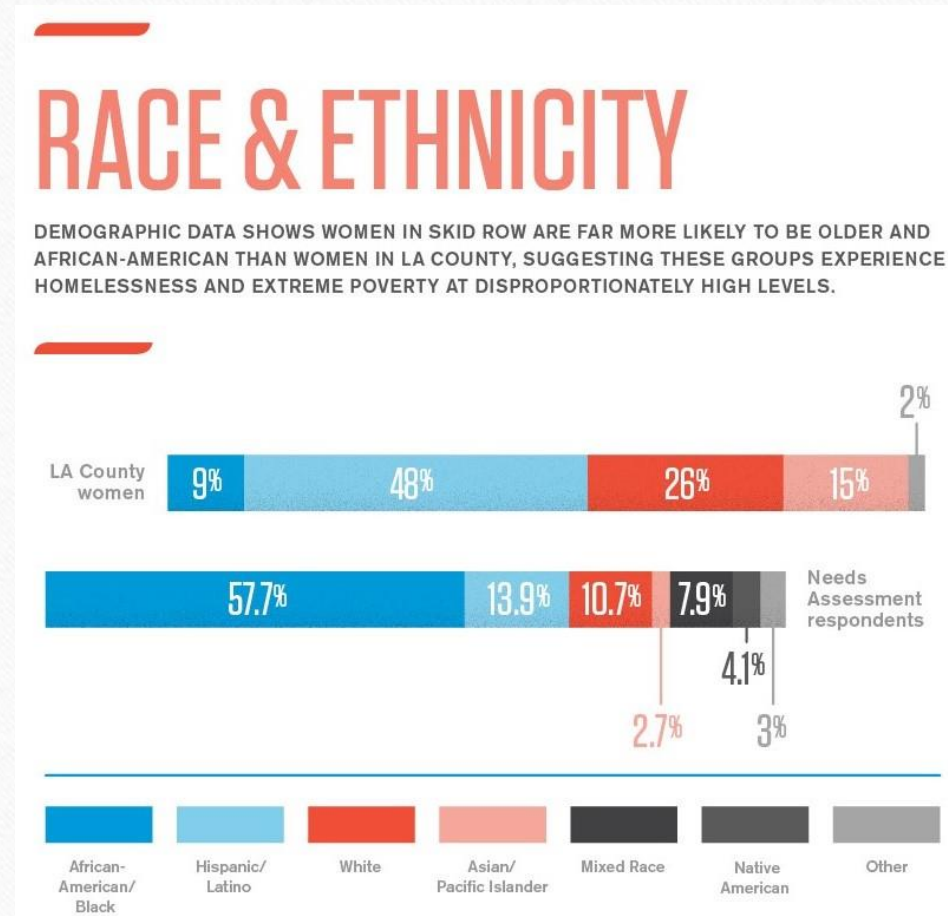
VIOLENCE AGAINST WOMEN

THE PERSISTENTLY HIGH RATE OF INTIMATE PARTNER VIOLENCE IS ONE OF THE MOST DISTINGUISHING DIFFERENCES BETWEEN WOMEN AND MEN EXPERIENCING HOMELESSNESS.



Race and Ethnicity

- 57.7% of homeless women are African American, yet only 8.7% of women in Los Angeles county are African American
- The majority of women who sleep on the street are Latinas 39.6%
- Latinas were more likely than other respondents to rate their health as poor (34.8%)
- Institutionalized racism, wage gap, and discrimination in housing and employment opportunities contribute to increased rates of homelessness



Sexual Orientation, Gender Identity, and Expression

- 15.4% of survey participants reported their sexual orientation as gay or lesbian, bisexual, or “other.”
- 7.8% of respondents reported their gender identity as transgender, gender queer, androgynous, or “other.”
- 40% of homeless foster youth identify as LGBTQ+ *
- Compared with 3.4% of American adults who self-identify as LGBTQ+*

* The Williams Institute, UCLA School of Law



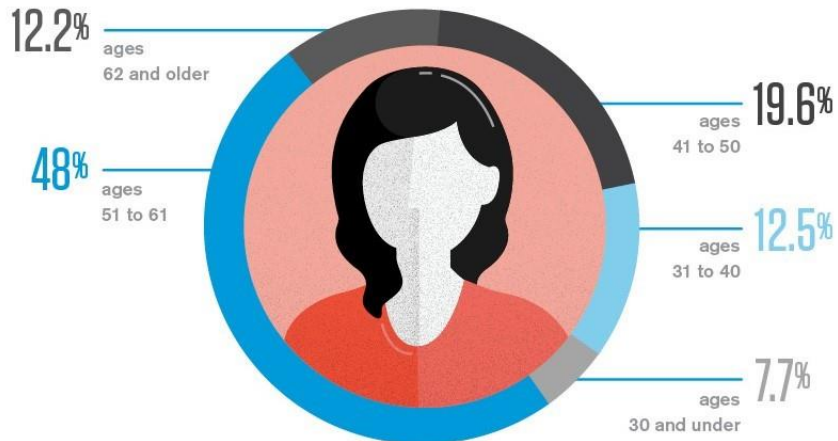
“I appreciate everything about DWC...I’m glad that a place like this exists for LGBT people to come to.” – ABIGAIL MALECKI

Age

- Homeless women age 10 – 20 years faster than housed women
- The majority (60.2%) are over the ages of 51, a 13% increase since 2010
- Increase in mortality rate after age 61, homeless population age 62 and over is 12.2%

AGE

DEMOGRAPHIC DATA SHOWS WOMEN IN SKID ROW ARE FAR MORE LIKELY TO BE OLDER AND AFRICAN-AMERICAN THAN WOMEN IN LA COUNTY, SUGGESTING THESE GROUPS EXPERIENCE HOMELESSNESS AND EXTREME POVERTY AT DISPROPORTIONATELY HIGH LEVELS.



HEALTHCARE

MORE WOMEN THAN EVER HAVE MEDICAL COVERAGE OR HEALTH INSURANCE (86.2%); HOWEVER, DESPITE IMPROVED ACCESS TO TREATMENT, SURVEY RESPONDENTS' PHYSICAL AND MENTAL HEALTH HAS WORSENERD.

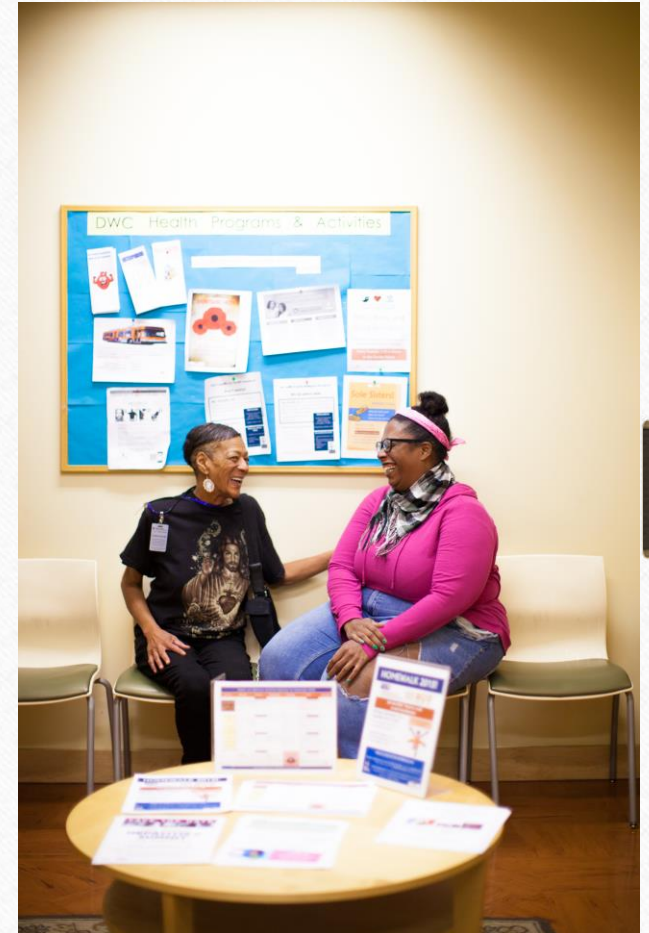


55.6% of women reported their physical health as being "fair" or "poor" in 2016.

42.3% of women reported their physical health as being "fair" or "poor" in 2013.

Meeting the Needs of a Diverse Population

- Gender:
 - Incorporate the feedback of women with lived experience
 - Employment and education services for women
- Race and Ethnicity:
 - Diversity of staff and board
 - Staff training on historical racism, systems of oppression, privilege
 - Bilingual staff and translated literature
- Sexual Orientation:
 - Communicate affirming and inclusive environments e.g. “Safe Space,” and rainbow insignia
 - Staff training on being LGBTQ+ affirming and inclusive
- Gender Identity and Expression:
 - Provide services based on how people identify not how they were assigned at birth
 - Ask for preferred pronouns
 - Gender neutral restrooms
- Age:
 - Health care that address the needs of women ages 51-61 e.g. mammogram and reproductive cancer screening
 - Accessible facilities e.g. wheelchair accessible, emergency exits, and disaster planning



What are some of the ways in which your organizations are meeting the needs of diverse populations?



DOWNTOWN **WOMEN'S** CENTER
Every woman housed

Amy Turk, LCSW, Chief Innovations Officer: AmyT@downtownwomenscenter.org

Erika Hartman, LMFT, Chief Program Officer: ErikaH@downtownwomenscenter.org

Dorothy Edwards: csh.advocate.d.edwards@gmail.com

www.downtownwomenscenter.org