

Housing First for Youth and Young Adults

Amy Louttit, JD

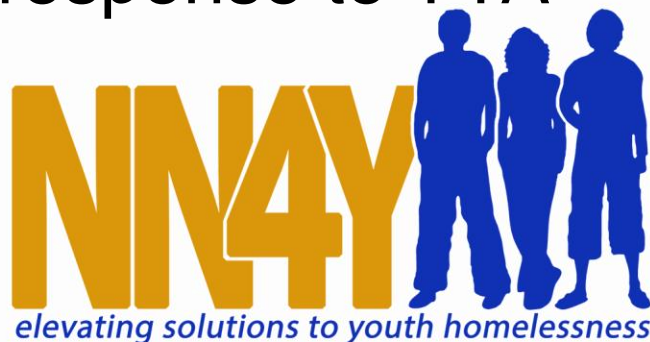
Public Policy Associate

amy.louttit@nn4youth.org



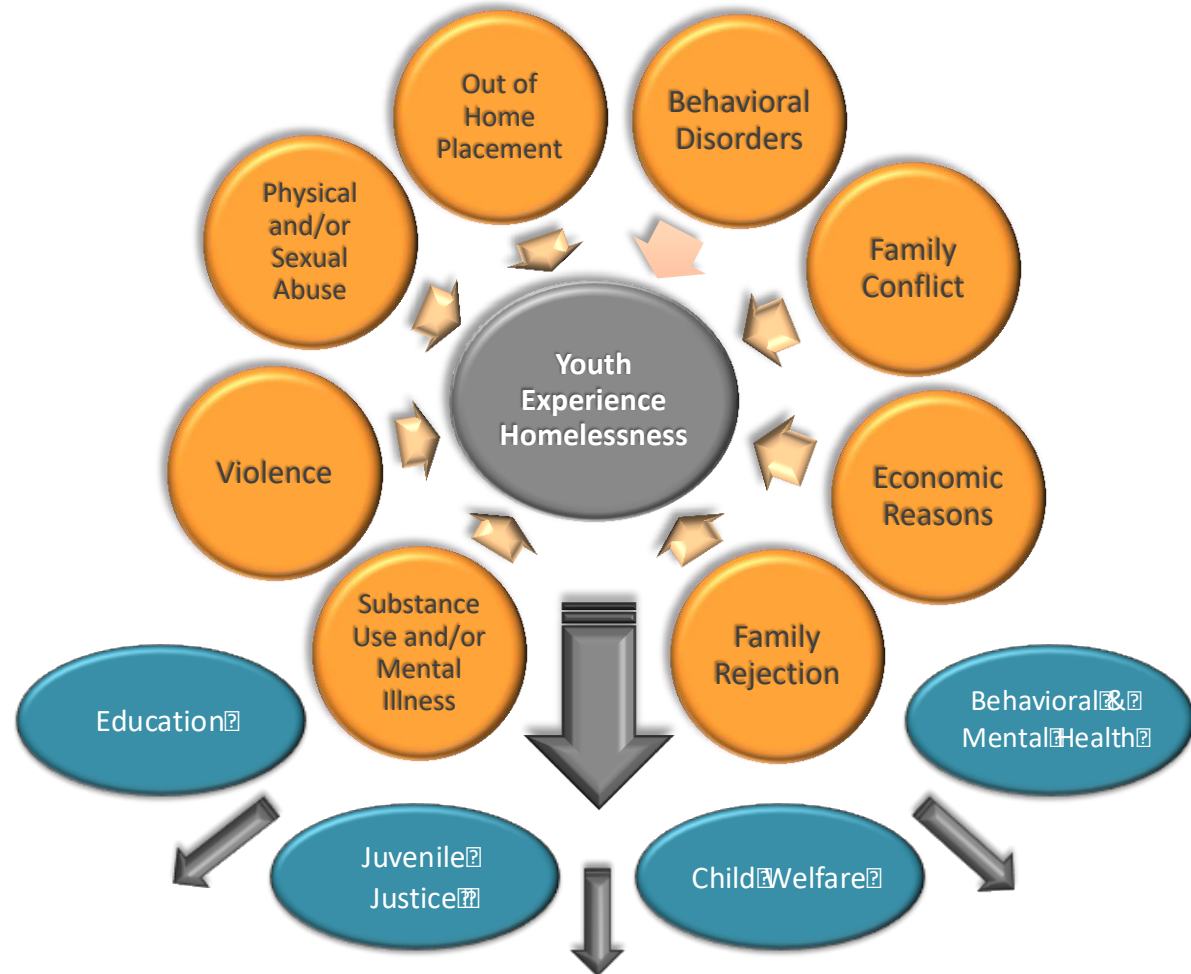
Roadmap:

- YYA Populations
- Housing First
 - The Model
 - As adapted for YYA
- Harm Reduction
 - The Principles
 - How it works with Housing First
- Housing First in the community response to YYA
- Questions for discussion



PATHWAYS TO HOMELESSNESS FOR YOUTH

**Contributing
Factors**



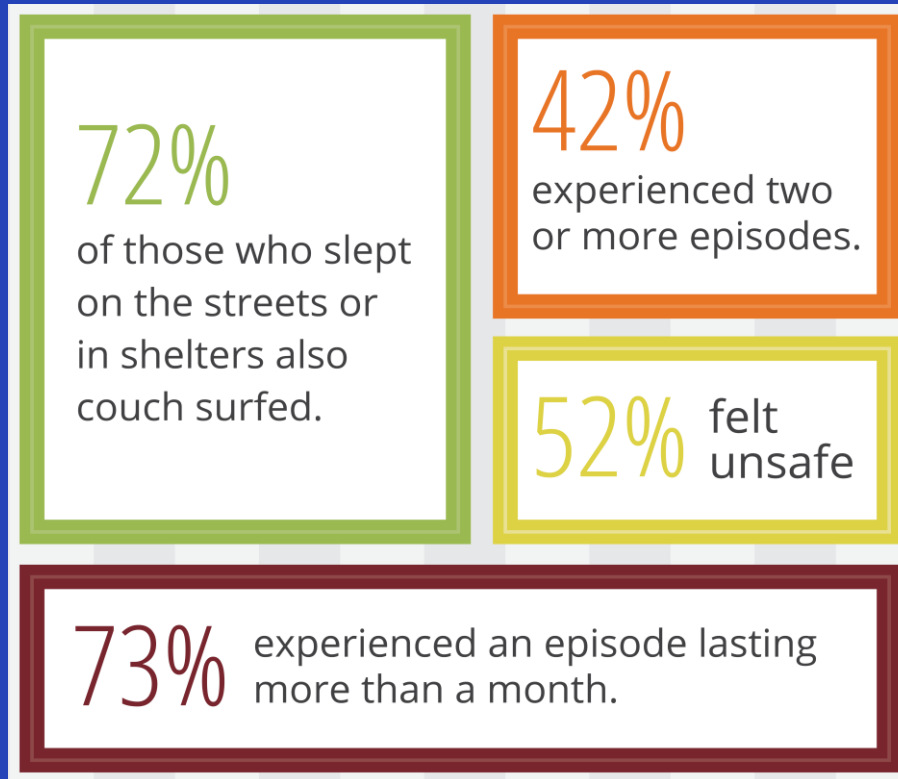
**Youth Fall
Through the
Cracks of
These Systems**

YOUTH ARE UNIQUE

- Youth are still developing
- Little to no work experience
- Often forced to leave their education
- Experience high levels of victimization
- Usually enter homelessness without ever having lived by themselves or being responsible for a household
- Often negotiating ongoing complicated relationships with their family

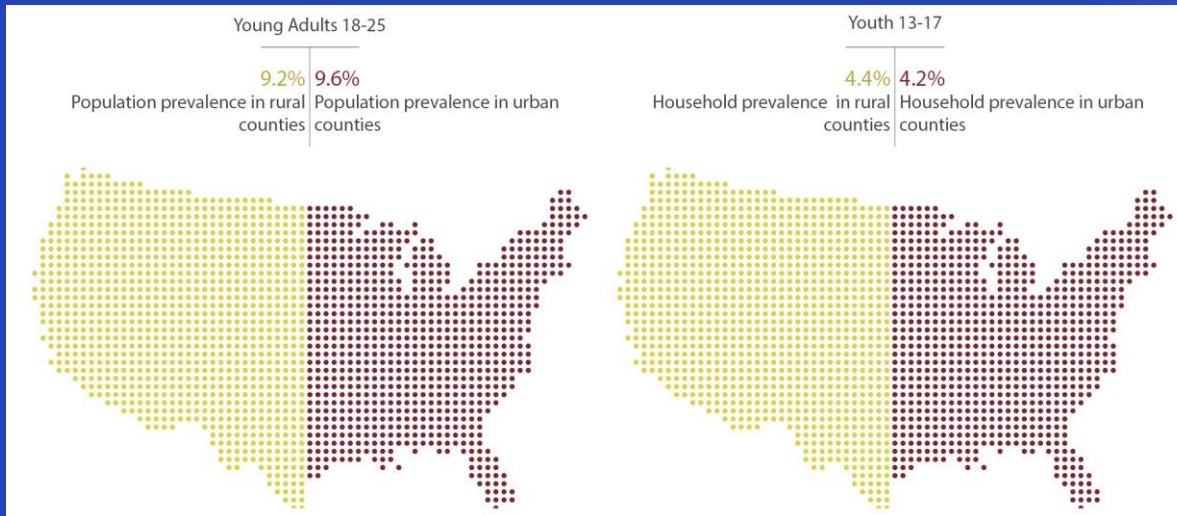
YYA Populations – Voices of Youth Count

- 3.5 million 18-24 year olds
- 700,000 13-17 year olds



YYA Trends – Voices of Youth Count

- Education: 3.5x more likely without a GED/Diploma
- About half experienced for the first time
- Rural vs Urban – same prevalence



Housing First

- Housing First is an approach that seeks to increase access to housing for individuals experiencing homelessness by providing housing as quickly as possible, without any preconditions (e.g. requirements for sobriety or employment), and then providing voluntary supportive services as needed.



Housing First: the Model

- Housing First operates on the premise that once an individual is in a basic level of “safe” housing, they can begin to engage with service providers to identify other areas of needs.
 - No preconditions
 - No rejection
 - Client driven supports
 - Substance abuse won't get you evicted



Housing First: Adapted for YYA

- In addition to the general principles, HF for YYA:
 - Youth Choice
 - PYD Orientation
 - Trauma informed
 - Developmentally appropriate
 - Positive growth
 - Program design and process
 - Social/community integration



Harm Reduction

- Harm reduction is a set of practical strategies and ideas that target reducing the consequences of substance use. These strategies and ideas encompass a continuum from safer use, to managed use, to abstinence in order to keep meeting the individual where they are at in their current state of using.



Harm Reduction Principles:

- Accepting substance use
- Reduce harmful effects
- Assess quality of life
- Understanding behaviors from use
- Elevating the voices of those using and have used
- Recognize and reflect realities of society and life



Housing First and Harm Reduction Together

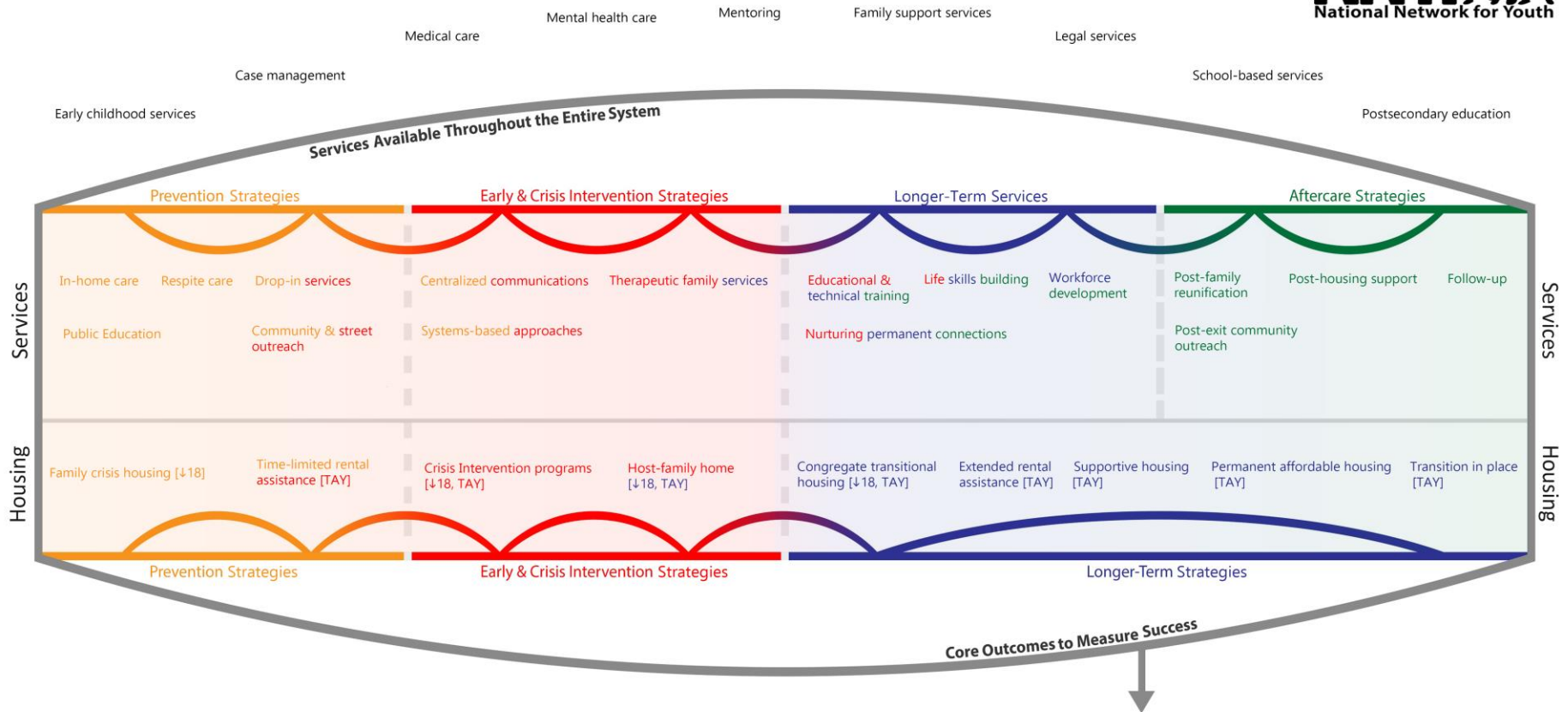
- Complimentary approaches
- Adult populations
- Youth populations
- Importance of options



Where Does Housing First for YYA Fit?

Proposed System to End Youth and Young Adult Homelessness

All support services & housing models should be implemented according to the following principles, defined on page 4:
Positive Youth Development, Trauma-Informed Care, Cultural Competence, Client Centered Care & Strengths-Based Family Services



Key

Support services or housing models that belong to **one** stage are identified by **one** color.

Support services or housing models that belong to **two** or **more** stages are identified by **two** or **more** colors. Each color appears in sequential order, beginning with the stage of origination.

QUESTIONS FOR YOUR COMMUNITY?

- Housing First for minors?
- Housing First for Transition Aged Youth?
 - Which population is it better for?
- Scattered site, pros and cons?
- Shared space, pros and cons?
 - Is one site model better?
 - Do some site models work better for certain populations?
- Words of wisdom? Anything missed?
 - HUD's recent Housing First for serving youth



THANK YOU



@nn4youth



www.nn4youth.org



@nn4youth



741 8th Street, SE | Washington, DC 20003 | (202) 783-7949

Contents of this document belong to NN4Y. All rights reserved.