



ENGAGING AND HOUSING THE MOST VULNERABLE USING AN INTEGRATED TEAM

Rachel Giles, LCSW, St. Joseph Center
Brittany Jasker, ASW, CADC, St. Joseph Center
April 10, 2018
Housing First Partners Conference 2018



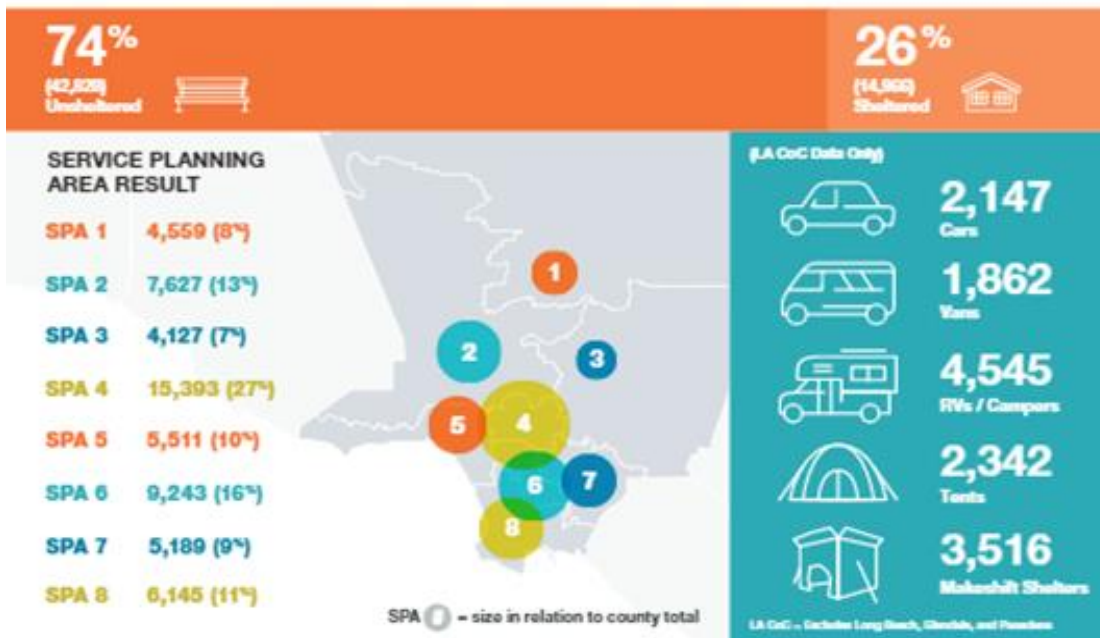
What to Expect!

- About Our Program
 - Integrated Mobile Health Team – Full Service Partnership (IMHT-FSP)
- Interdisciplinary Team & Roles
- Benefits & Challenges
- Case Presentation
- Modalities & Techniques
- Questions

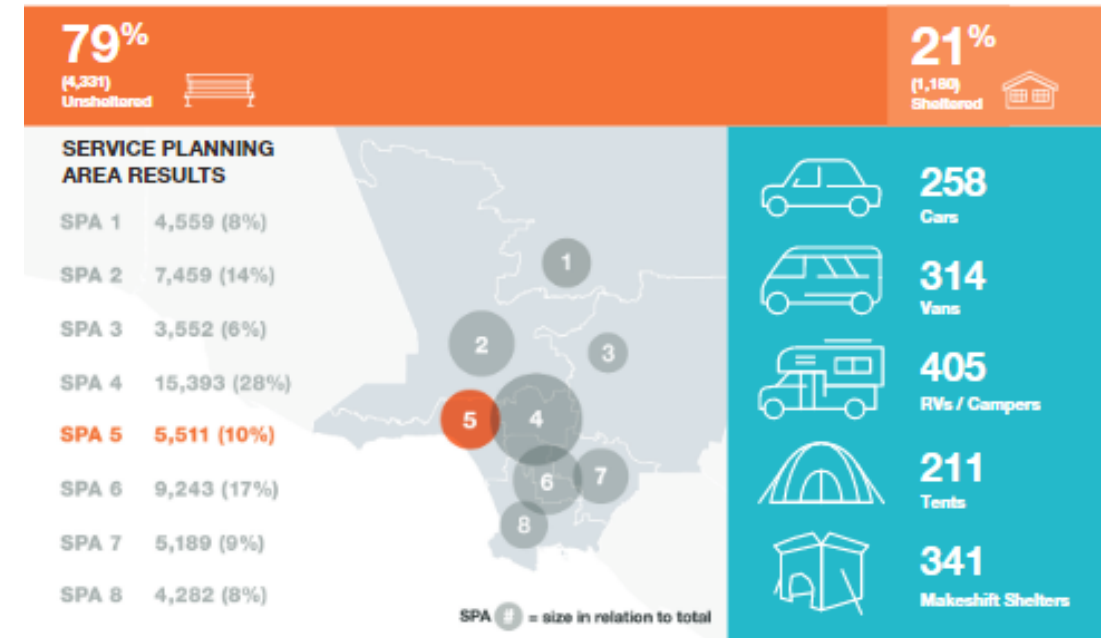
Homelessness in Los Angeles County



WHERE ARE PEOPLE EXPERIENCING HOMELESSNESS?



WHERE ARE PEOPLE EXPERIENCING HOMELESSNESS?



<https://www.lahsa.org/documents?id=1715-homeless-count-2017-los-angeles-continuum-of-care-fact-sheet.pdf>

<http://www.coalitionforthehomeless.org/basic-facts-about-homelessness-new-york-city/>

What is the Integrated Mobile Health Team?

- Innovative programs to address mental illness and homelessness
- Housing First and Harm Reduction Models
- Collaboration between Venice Family Clinic and St. Joseph Center
- 10 staff employed by St. Joseph Center
- Referral Sources



Providing quality primary health care to people in need

Who do we serve?

- Quad-morbidity
- Individual adults and older adults
- Most likely to die on the streets within a year
- Life expectancy: 25 years shorter
- 50 clients



Providing quality primary health care to people in need

Leadership



Rachel Giles, LCSW
Senior Program Manager



Brittany Jasker, ASW, CADC
Lead Mental Health Specialist



Mental Health Specialists



- Individual Therapy
- Substance Use Counseling
- Skill Building
- Therapeutic Case Management

Case Managers & Representative Payee



- **Case Managers**
 - Linkages to resources
 - Assisting with appointments
 - Obtain documents for housing
 - Independent living skills
- **Representative Payee**
 - Money Management skills
 - Budgeting

Medical & Psychiatric Supports



- **Psychiatry**
 - Prescribe medications
 - Injectables
 - Diagnosing



- **Medical**
 - Prescribe Medications
 - First aid
 - Wound care



Interns & Support Staff



- **Interns**
 - BSW & MSW Interns
 - Jumpstart Interns
 - Occupational Therapy Interns
 - Medical & Psychiatry Residents from UCLA School of Medicine
- **Administrative Asst.**
 - Budget
 - Electronic Health Records



Benefits & Challenges of Our Team

■ Benefits:

- *Wrap around approach*
- *Multidisciplinary*
- *Field Based*
- *Long Engagement*
- *Resource rich*
- *Team size*
- *Communication*

■ Challenges:

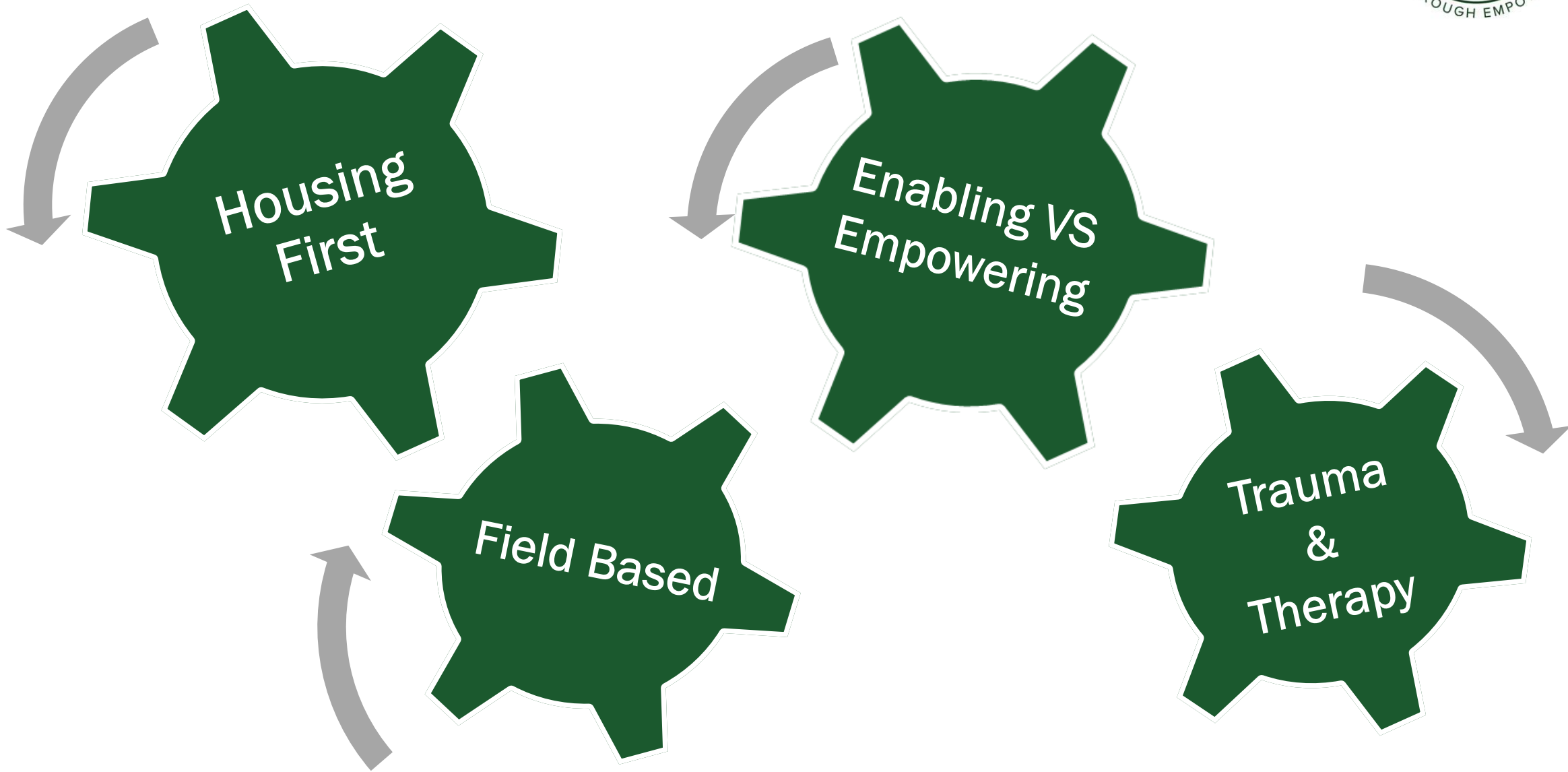
- *Intensity of client population and needs*
- *Long engagement*
- *Motivation through minimal progress*
- *Grave Disability*
- *Safety*
- *Mortality rates*

Case Presentation

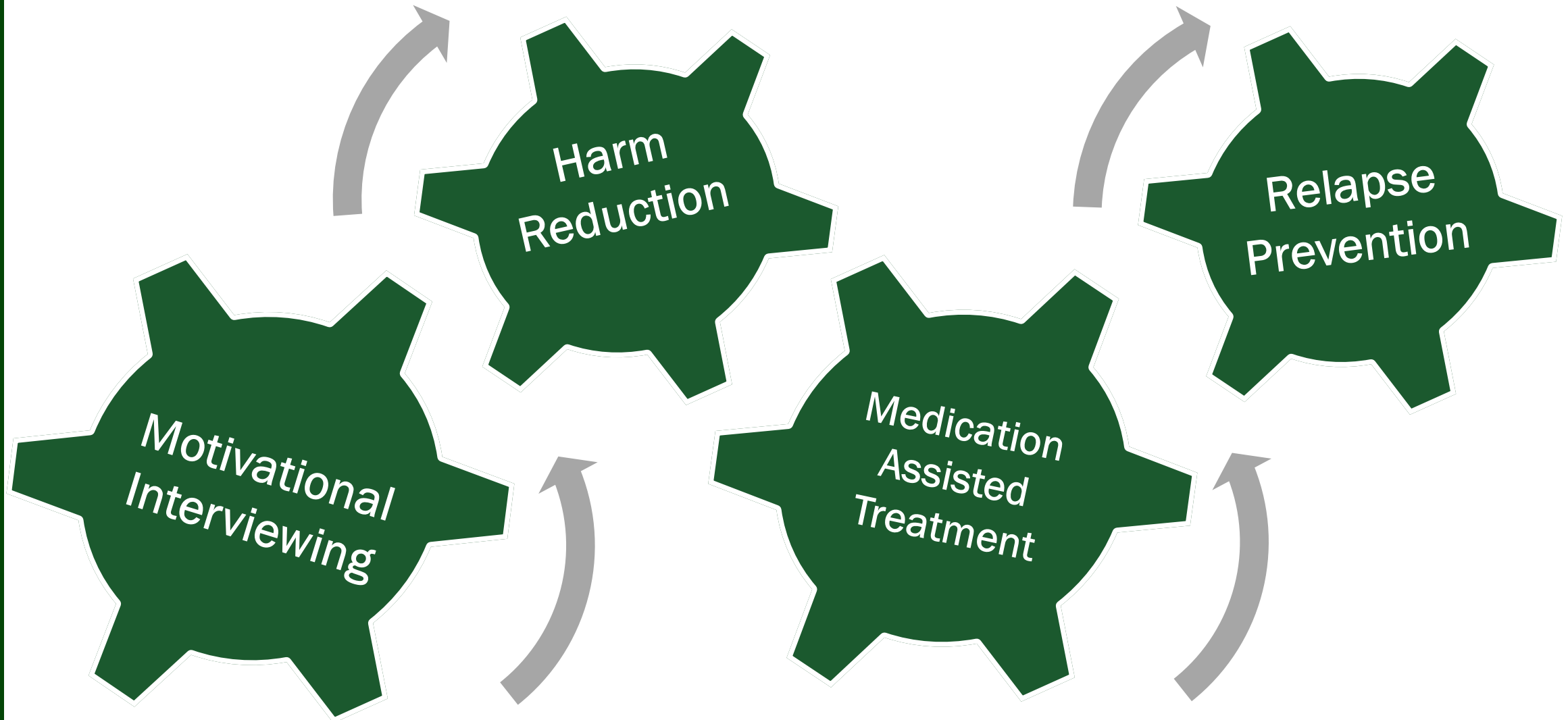
- 48yr old, Caucasian, Male
- 12 yr homeless history
- Dx: PTSD, MDD, Alcohol Dep, Cannabis Dep
- Medical: HEP C
- SI/HI & psychiatric hospitalizations.
- Legal: assault & battery
- 7th grade education
- DV relationships



What was David's journey like?



What was David's journey like?



David Now!





Why does the Integrated Team work?

- *Housing First and Harm Reduction Model*
- *Integrated and Interdisciplinary Team*
- *Strong collaborations*
- *Best Practices*
- *One size does not fit all*
- *Learned from our clients*
- *Commitment to our agency's mission*



Our Results!!

- *Contract extended was extended after the 3 year pilot*
- *Housed almost 100 of the quad-morbid population!*
- *26 clients of our current 50 clients have SSI; 14 are applying or appealing*
- *2 clients have returned to full time work; 1 is applying for employment*



Brittany Jasker, ASW, CADC
bjasker@stjosephctr.org



What do you think!?

■ Questions for audience.

- *What does engagement look like on your teams? Do you see room for change?*
- *Does anyone use the Housing First model and what does that look like?*
- *What interventions are you using that you also find successful?*

■ Closing Discussion

- *Are there any ways that you can see your team integrating these other components into your own programs?*