



**CENTRAL CITY
CONCERN**

HOMES HEALTH JOBS



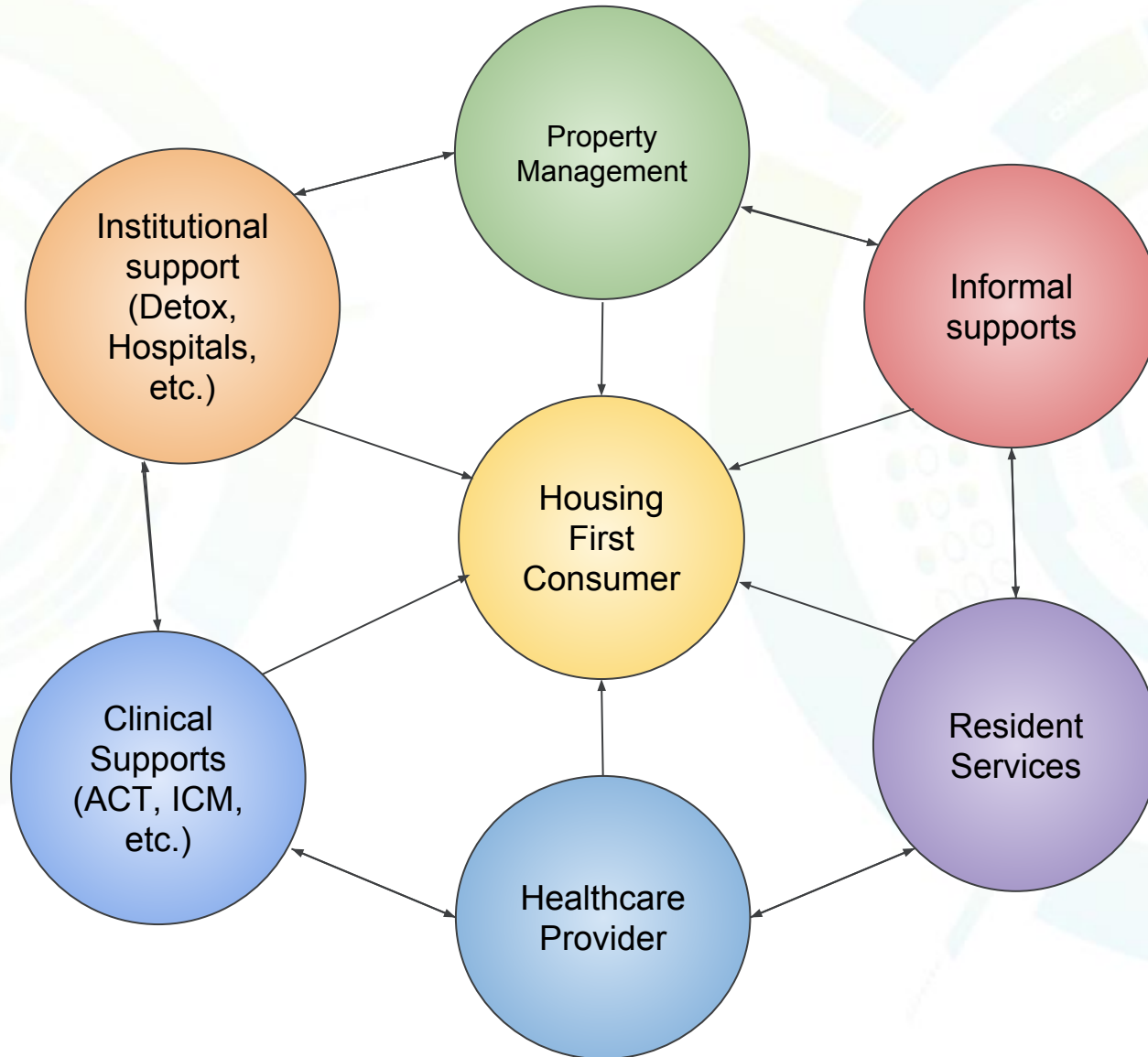
Integrated Models for Treatment and Support

Interdisciplinary Housing First Teams

Mike Savara, CSWA, CADIC III
Team Lead, Bud Clark Commons Case Management
Central City Concern

Shalonna Jackson
Resident and Community Service Coordinator
Home Forward

Integrated Models for Treatment & Support



Group Time



Activity 1

- Break into small groups
- Take a few minutes with your group and think about and discuss the ideal:
 - Resident Services Staff
 - Property Management Staff
 - Case Management Staff
- Share and Discuss with the larger group

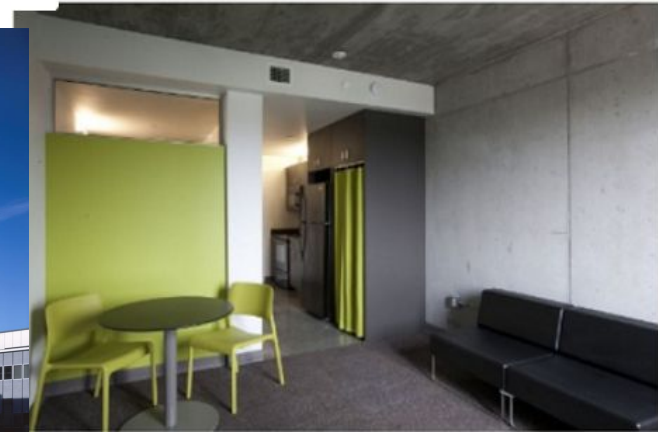
Group Time



Activity 2

- Using Mr. Potato Head create your ideal colleague.
- Show off and Share your rockstar colleague

Bud Clark Commons



- The apartments at Bud Clark Commons provide 130 apartments and supportive services for some of Portland's Most vulnerable homeless residents.
- The Commons floors consist of 130 units of permanent supportive housing reserved for the region's most vulnerable homeless persons.
- The 350-square-foot studio apartments include a bathroom and a kitchenette.
- A common room on the fourth floor offers residents a television and internet access, and balconies on each floor provide outdoor gathering spaces

Bud Clark Commons Strategies



Top Priorities

- Housing retention
- Increasing and Maintaining engagement to healthcare

Residents saw significant declines in unmet health care needs and reported improvements in self-reported physical and mental health, after moving into BCC housing

Bud Clark Commons



Approach

Bud Clark Commons is a housing provider that combines fully integrated services with a harm reduction model that prioritized housing for the most vulnerable. Since the doors have opened in 2011, 80% of BCC residents have remained in housing. Key components also include:

- Using the Housing First Model

The flexible and responsive nature of the Housing First approach allows it to be tailored to help a variety of barriers

- Harm reduction

Priorities housing for the most vulnerable and does not screen out resident struggling with addiction

Bud Clark Commons



- **Assertive Engagement**

Through various engagement practices residents who acquired stable housing, utilization and lifestyle patterns changed

Supportive Care Coordination

- Tracking Systems and Follow up Procedure
- Resident Intake and Exit Procedure
- Health Care and Crisis Incidents

Bud Clark Commons

The background features a light green and blue color scheme with faint, large-scale gear patterns. A horizontal line of ten small, colored circles (yellow, green, blue, purple, red) is positioned below the title.

Other Examples of Supportive Care Coordination

- Income Development
- Resident led goal setting



Thank you for joining us

Handouts available:

Core Study Handout

Information Links & Websites:

Homeforward.org

Centralcityconcern.org

https://www.huduser.gov/portal/casestudies/study_12202012_1.html